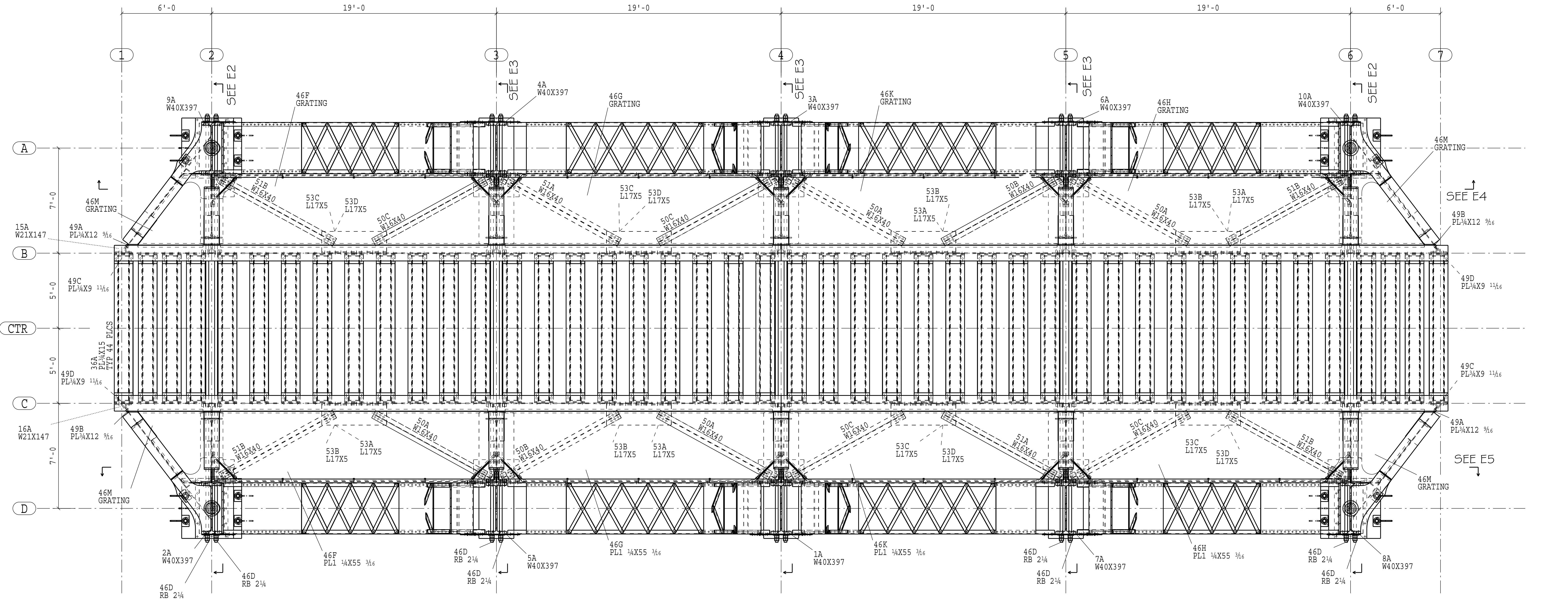
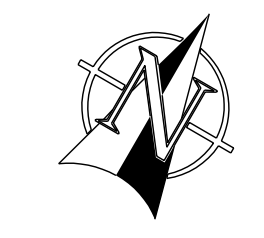


| FIELD BOLT SUMMARY |      |        |                      |         |
|--------------------|------|--------|----------------------|---------|
| QTY.               | DIA. | LENGTH | ROLT GRADE/SHIP WITH | REMARKS |
| 1080               | 3/4" | 2 1/2" | A325/BEVEL/HEAVY HEX |         |
| 180                | 3/4" | 2 3/4" | A325/BEVEL/HEAVY HEX |         |
| 164                | 3/4" | 3 1/4" | A325/BEVEL/HEAVY HEX |         |
| 4                  | 3/4" | 3 1/2" | A325/BEVEL/HEAVY HEX |         |
| 16                 | 3/4" | 1 3/4" | A325/PLAIN/HEAVY HEX |         |
| 64                 | 3/4" | 2"     | A325/PLAIN/HEAVY HEX |         |
| 4                  | 3/4" | 2 1/4" | A325/PLAIN/HEAVY HEX |         |
| 14                 | 3/4" | 2 1/2" | A325/PLAIN/HEAVY HEX |         |
| 84                 | 3/4" | 2 3/4" | A325/PLAIN/HEAVY HEX |         |
| 24                 | 3/4" | 3 3/4" | A325/PLAIN/HEAVY HEX |         |
| 192                | 1"   | 2 1/2" | A490/PLAIN/HEAVY HEX |         |
| 796                | 1"   | 2 3/4" | A490/PLAIN/HEAVY HEX |         |
| 240                | 1"   | 3"     | A490/PLAIN/HEAVY HEX |         |
| 280                | 1"   | 3 1/4" | A490/PLAIN/HEAVY HEX |         |
| 328                | 1"   | 3 1/2" | A490/PLAIN/HEAVY HEX |         |
| 36                 | 1"   | 4"     | A490/PLAIN/HEAVY HEX |         |
| 432                | 1"   | 4 1/2" | A490/PLAIN/HEAVY HEX |         |
| 136                | 1"   | 4 3/4" | A490/PLAIN/HEAVY HEX |         |
| 116                | 1"   | 5"     | A490/PLAIN/HEAVY HEX |         |
| 48                 | 1"   | 5 1/4" | A490/PLAIN/HEAVY HEX |         |
| 64                 | 1"   | 5 1/2" | A490/PLAIN/HEAVY HEX |         |
| 88                 | 1"   | 6"     | A490/PLAIN/HEAVY HEX |         |



PLAN AT BOTTOM CHORD OF BRIDGE

REF. ELEVATION 0'-0



NOTE:  
WORK THIS DWG. WITH  
DWGS. E2, E3, E4, E5 & E6

|          |                         |     |
|----------|-------------------------|-----|
| 06/06/04 | ISSUED FOR CONSTRUCTION | CSD |
| 05/17/04 | ISSUED FOR RE-APPROVAL  | CSD |
| 09/02/03 | ISSUED FOR APPROVAL     | CSD |

**UNIVERSAL STRUCTURAL, INC.**  
604 S.E. VICTORY AVE.  
VANCOUVER, WASHINGTON

**Cadre Steel Detailing**

JOB NAME & LOCATION:  
Guadalupe River Bridge  
San Jose, California

ARCH. \_\_\_\_\_  
ENGR. US Army Corps of Engineers  
CONTR. \_\_\_\_\_

REF. \_\_\_\_\_  
DRAWN BY: 09/02/2003  
CHECKED BY: \_\_\_\_\_

JOB 24107  
**E1**

MODIFIED DATE: 05/17/2004  
LAST PLOT DATE: 06/06/2004  
CAD FILENAME: MAIN BRIDGE FAB-1-NEW