

METRIC

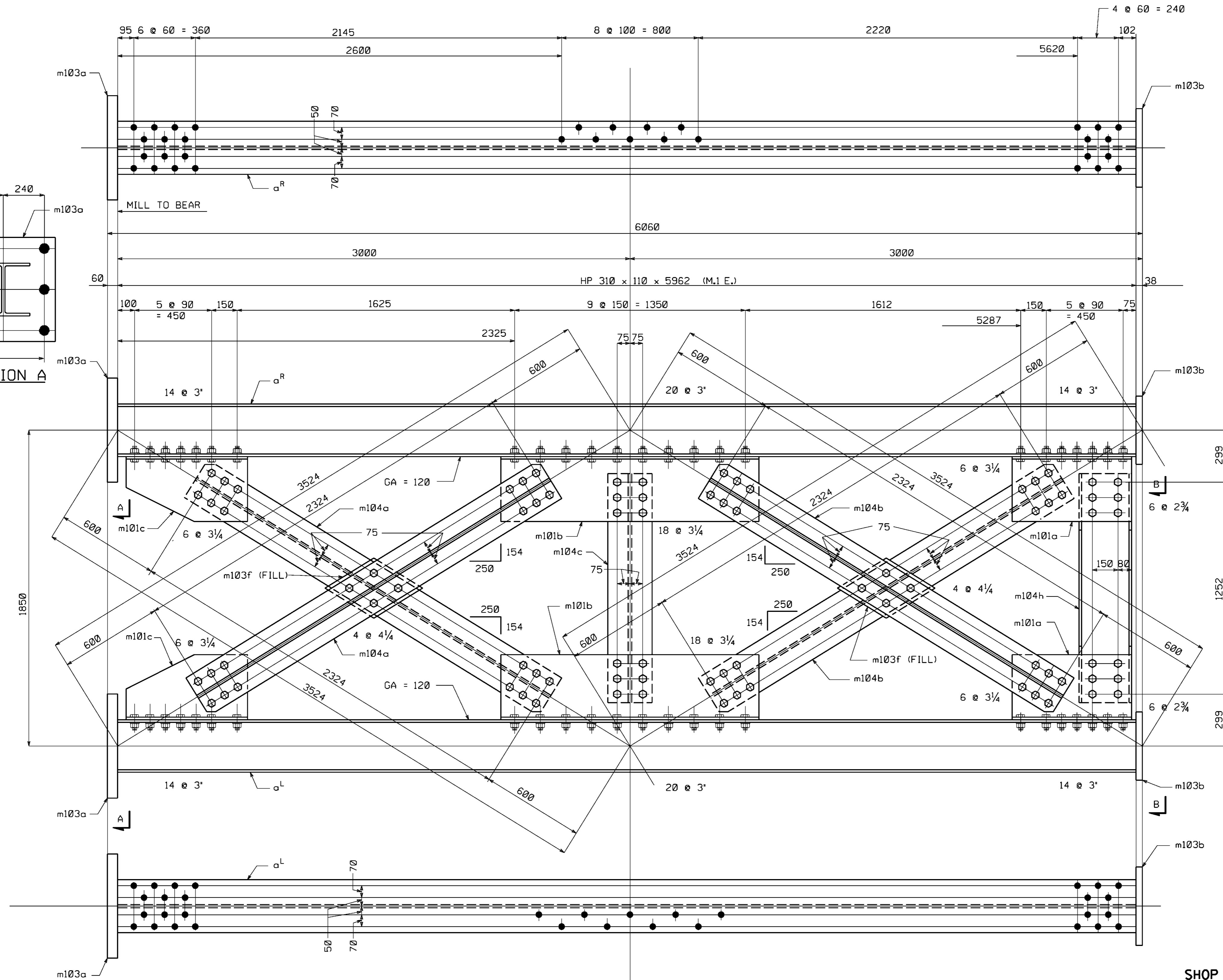
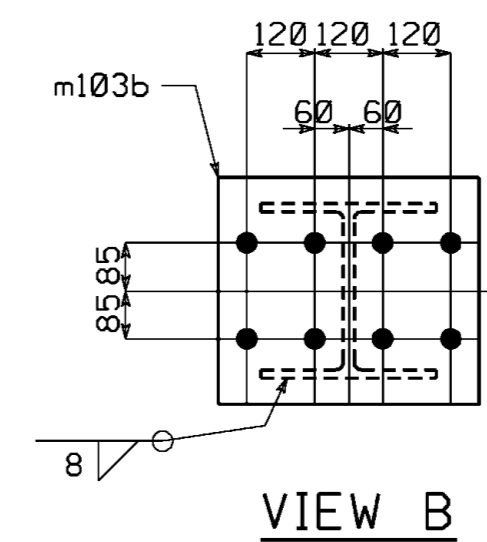
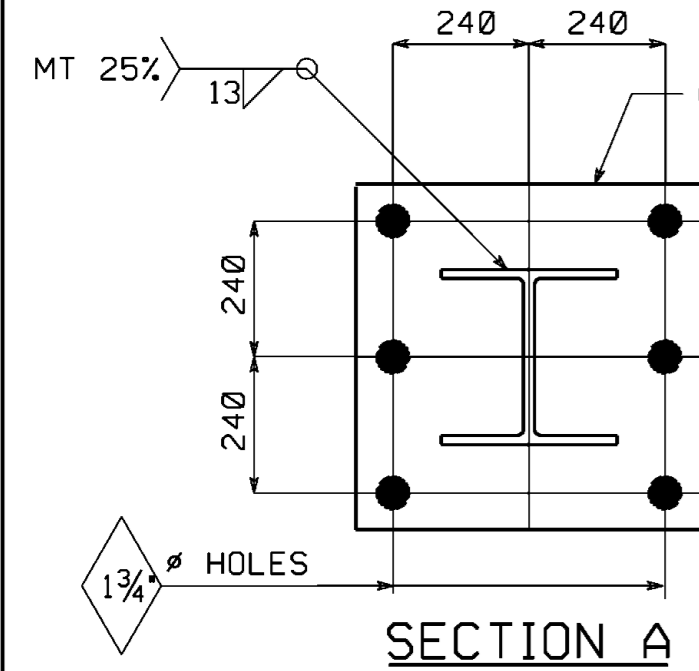
METRIC

1. ALL DIMENSIONS ARE IN MILLIMETERS UNLESS OTHERWISE NOTED.
2. ALL WEIGHTS ARE IN KILOGRAMS.

| | | |
|--------------------|-------|--------------------|
| FED. ROAD DIV. NO. | STATE | FED. AID PROJ. NO. |
| 3 | PA | |

BILL OF MATERIAL

| NO. | MARK | DESCRIPTION | LENGTH | REMARKS | ITEM | SHIP. WEIGHT |
|-----|----------------|---------------------------|--------|------------------------------|------|--------------|
| 2 | B2A | BENT ASS'Y | | | | 3247kg |
| 2 | B4A | BENT ASS'Y | | | | 3247kg |
| 8 | a ^R | HP 310x110 | 5962 | MIE (T) (HP 12 x 74) | | |
| 8 | m103a | PL 60x610 | 610 | (T) A709M GR. 250 | | |
| 8 | m103b | PL 38x400 | 460 | (T) A709M GR. 250 | | |
| 8 | m103f | PL 14x280 | 454 | FILL (T) | | |
| 8 | m104a | WT 125x65.5 | 2424 | (WT 5x44) (T) A709M GR. 250 | | |
| 8 | m104b | WT 125x65.5 | 2424 | (WT 5x44) (T) A709M GR. 250 | | |
| 4 | m104c | WT 125x65.5 | 1352 | (WT 5x44) (T) A709M GR. 250 | | |
| 4 | m104h | HP 310x110 | 1352 | (HP 12x74) (T) | | |
| 8 | m101a | WT 380x86.5 | 700 | (WT 15x58) (T) A709M GR. 250 | | |
| 8 | m101b | WT 380x86.5 | 1510 | (WT 15x58) (T) A709M GR. 250 | | |
| 8 | m101c | WT 380x86.5 | 710 | (WT 15x58) (T) A709M GR. 250 | | |
| 48 | | 1" H.S. BOLTS | 2 3/4" | | | |
| 384 | | 1" H.S. BOLTS | 3" | | | |
| 240 | | 1" H.S. BOLTS | 3 1/4" | | | |
| 32 | | 1" H.S. BOLTS | 4 1/4" | | | |
| 704 | | WASHERS FOR 1" H.S. BOLTS | | | | |



BENT ASSEMBLY MK. B2A
BENT ASSEMBLY MK. B4A

SHOP NOTE

HOLES: 1/16" (UN)
BOLTS: AS NOTED
PAINT: SEE DWG. GNI
FOR GENERAL SHOP NOTES, SEE DWG. GNI.

| NO. | REVISION | BY | DATE |
|-----|----------|----|------|
| | | | |

HIGH STEEL STRUCTURES, INC.
1770 Hempstead Road
Lancaster, PA 17605-0008
Phone 717/299-5211
A Division of High Industries, Inc.

BENTS
N.S. RAILWAY TEMP. TRESTLE BRIDGE OVER S.R. 0309
N.S. RAILWAY TEMP. TRESTLE BRIDGE STA. 8 + 671.276
MONTGOMERY COUNTY, PA
COMMONWEALTH OF PENNSYLVANIA
DEPARTMENT OF TRANSPORTATION

STATE CONTRACT OR REF. NO. S-25417 ECMS NO. 64275
CONTRACTOR NYLEVE BRIDGE CORPORATION
IN CHARGE: COLONIAL(WRC) MADE BY: JTC CHK'D BY: RAS DATE: 10/13/04
CONTRACT NUMBER: PA-04091-1 DRAWING NUMBER: 102 OF 132