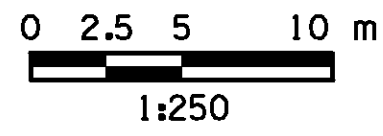
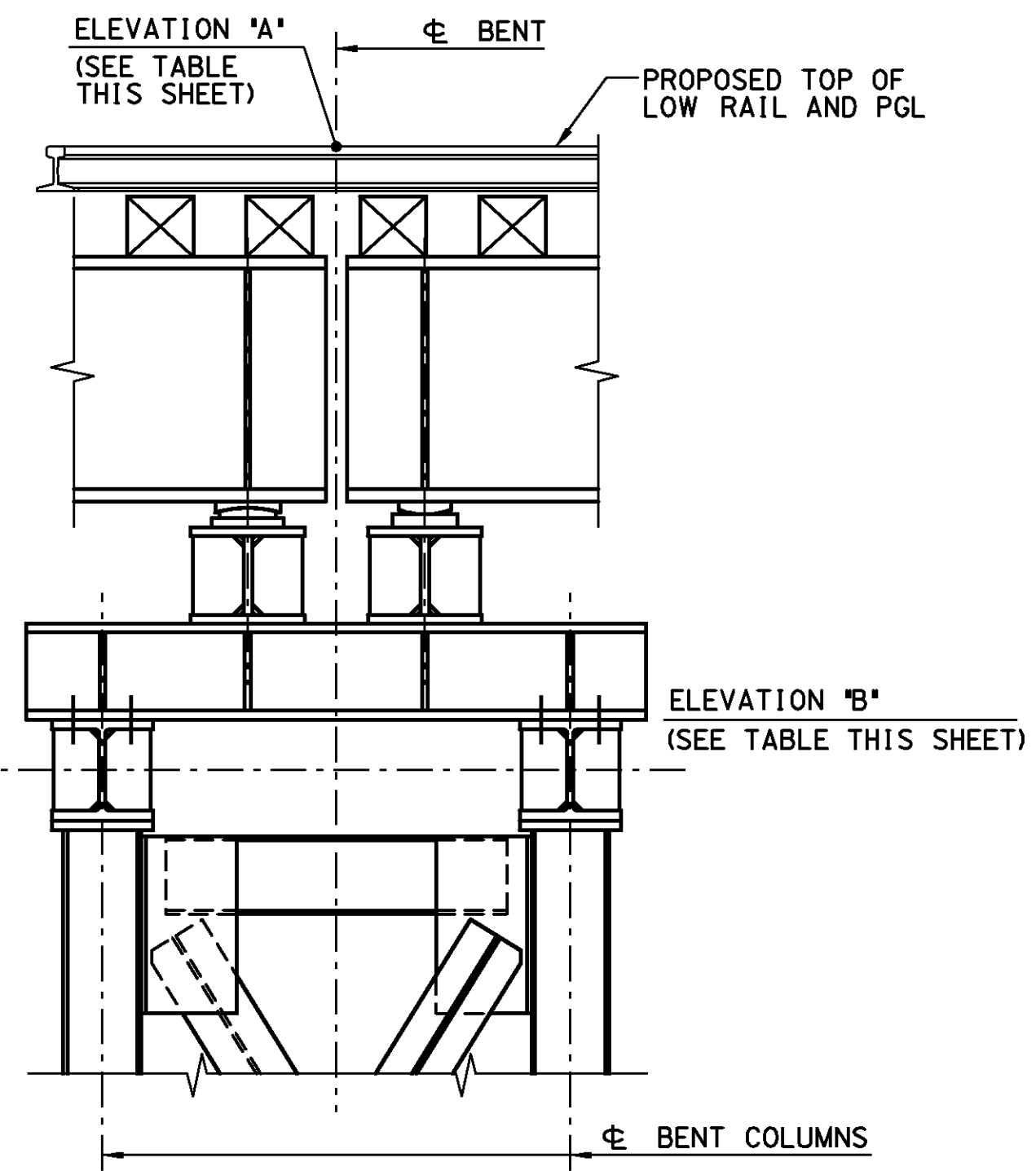


SECTION ALONG CONSTRUCTION TEMPORARY RUNAROUND



LEGEND:
 B.P.C.E. - BOTTOM OF PILE CAP ELEVATION
 E.P.T.E. - ESTIMATED PILE TIP ELEVATION
 B.F.E. - BOTTOM FOOTING ELEVATION
 --- TEMPORARY EXCAVATION SUPPORT AND PROTECTION SYSTEM

INDEX OF DRAWINGS	
SHEET NUMBER	TITLE
1	GENERAL PLAN
2	ELEVATION
3	TYPICAL SECTION
4	GENERAL NOTES
5	QUANTITIES
6	SEQUENCE OF CONSTRUCTION - STAGE 1A
7	SEQUENCE OF CONSTRUCTION - STAGE 1B
8	SEQUENCE OF CONSTRUCTION - STAGE 1C
9	SEQUENCE OF CONSTRUCTION - STAGE 2
10	STAKE-OUT PLAN
11	BENTS 2 AND 3 FOUNDATION GROUTING PLAN
12	BENT FOOTING PLAN - I
13	BENT FOOTING PLAN - II
14	BENT FOOTING PLAN - III
15	BENT FOOTING PLAN - IV
16	BENT FOOTING PLAN - V
17	BENT FOOTING PLAN - VI
18	TIMBER LAGGING DETAILS
19	BENT ELEVATIONS - I
20	BENT ELEVATIONS - II
21	BENT ELEVATIONS - III
22	BENT ELEVATIONS - IV
23	BENT CONNECTION DETAILS - I
24	BENT CONNECTION DETAILS - II
25	BENT CONNECTION DETAILS - III
26	BENT CONNECTION DETAILS - IV
27	BENT CONNECTION DETAILS - V
28	BENT CONNECTION DETAILS - VI
29	BENT CONNECTION DETAILS - VII
30	CROSS GIRDER DETAILS - I
31	CROSS GIRDER DETAILS - II
32	FRAMING PLAN - I
33	FRAMING PLAN - II
34	GIRDER ELEVATION
35	DIAPHRAGM DETAILS
36	LATERAL BRACING DETAILS
37	UTILITY DETAILS
38	BEARING DETAILS - I
39	BEARING DETAILS - II
40	BEARING DETAILS - III
41	TIE LAYOUT PLAN - I
42	TIE LAYOUT PLAN - II
43-44	REINFORCEMENT BAR SCHEDULE
45	BRIDGE TIE DETAILS
46-65	TIE DAPPING PLANS
66-77	STRUCTURE BORINGS



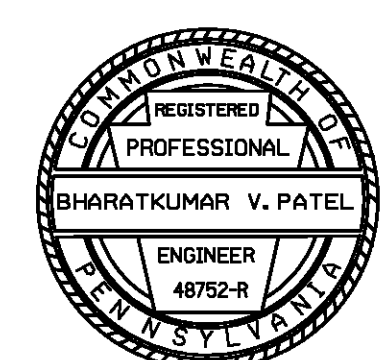
ELEVATION
(BENT 4 SHOWN, OTHER BENTS SIMILAR)
NOT TO SCALE

ELEVATIONS AT BENT		
BENT	A	B
1	61.821	—
2	61.873	59.593
3	61.947	59.317
4	62.026	59.386
5	62.106	59.462
6	62.202	59.559
7	62.299	59.660
8	62.399	59.765
9	62.472	60.171
10	62.546	60.262
11	62.598	—

Mark	Description	By	Chk'd.	Rev'd.	Date
REVISIONS					

SR 0309 PREVIOUSLY KNOWN AS LR 782

PREPARED BY:
GANNETT FLEMING, INC.
Valley Forge, PA



COMMONWEALTH OF PENNSYLVANIA
DEPARTMENT OF TRANSPORTATION

MONTGOMERY COUNTY
SR 0309 SEC 103
SEG 0150 OFF 302 NB SEG 0151 OFF 302 SB
NORFOLK SOUTHERN RAILWAY (MILEPOST MV 24.09)
OVER SR 0309 STA 8+671.276
TEMPORARY RUNAROUND TRESTLE BRIDGE
ELEVATION

Recommended JUNE 02, 2004

SHEET 2 OF 77

S-25417

DESIGNED: TAR
DRAWN: EGH/LEF
CHECKED: YWL

FILE: g:\v\te309\struc\N\sr0309\runarndbr\ldge\1m\se01.dgn
DATE: 10-May-2004 1:20